



EFSA Overview of progress and challenges toward future data concepts

*EFSA Stakeholders Forum
November 2018*

AGENDA

- Reflections on the changing nature of data
- Themes to drive organisational change
 - Scientific innovation and new data streams
 - Distributed Data: 'data collection' to 'data connection'
 - Quantitative and data driven methods
 - Exploring the living opinion

NEXUS OF FORCES

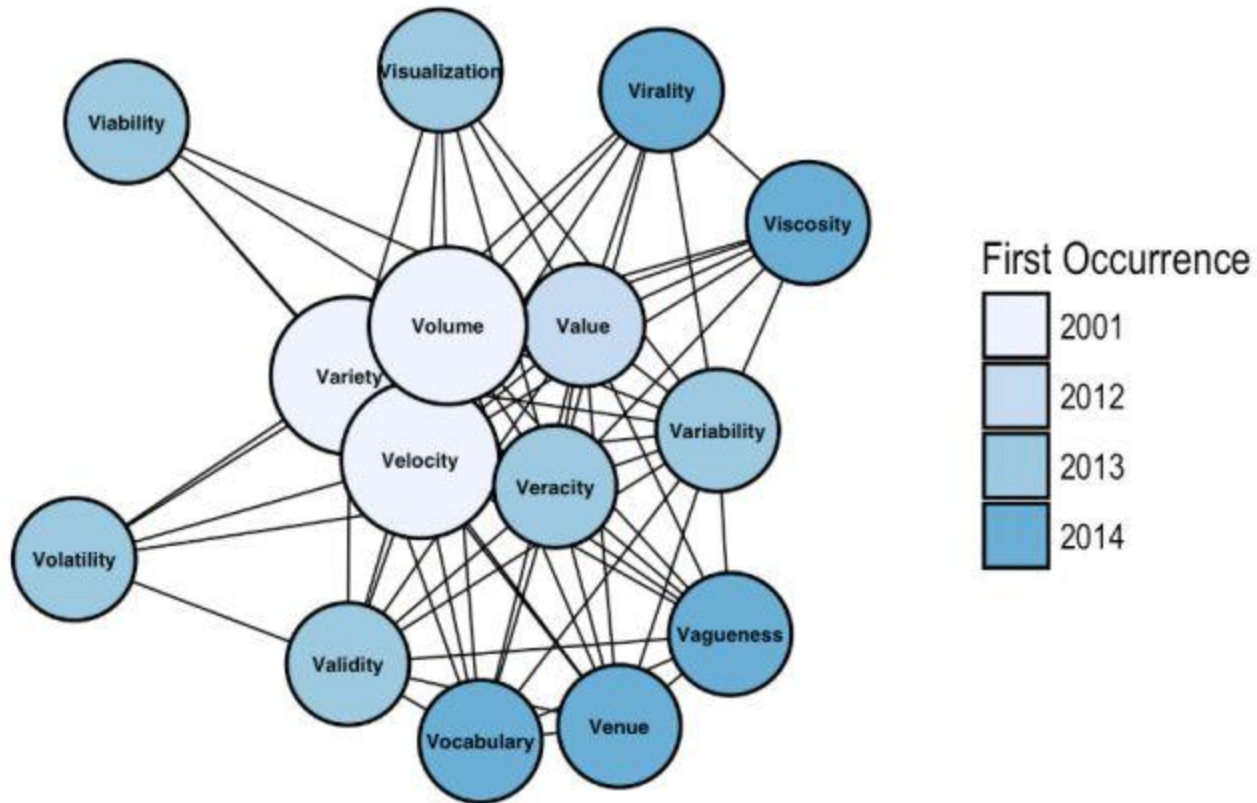
- Societal forces arising 1990-2010
- Convergence and mutual reinforcement of social, mobile, cloud, analytics driving societal change 2008-2014
- No organisation immune to the societal change

A NEXUS OF FORCES



Gartner

THE NATURE OF DATA NOW



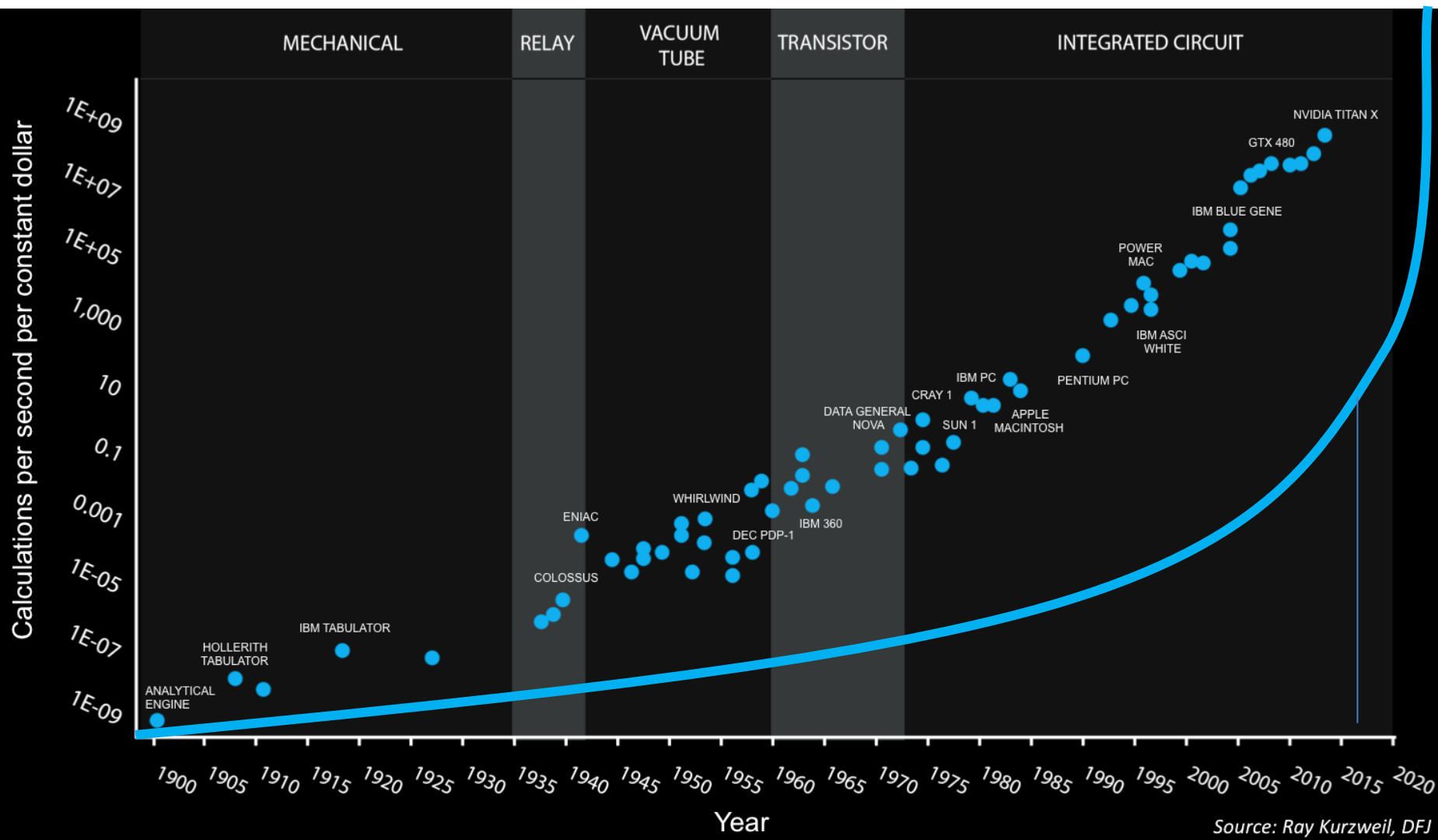
THE NATURE OF DATA NOW

The Top Big Data Challenge Remains the Same

What are your organization's top 3 hurdles or challenges with big data?



COMPUTATIONAL EXPLOSION SINCE 2015



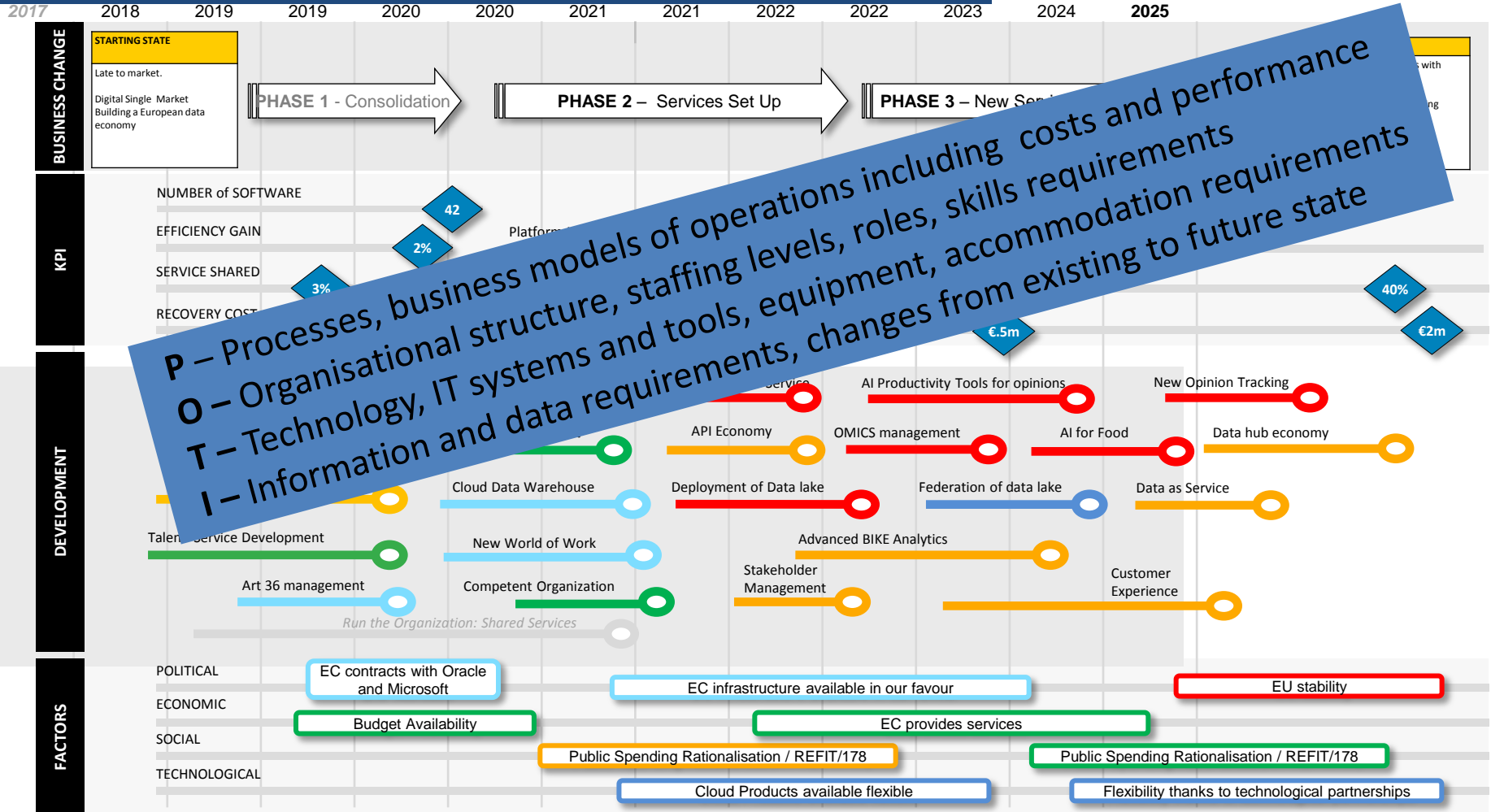
THE TECHNOLOGY IS CHEAP AND THE DATA IS OPEN

Populism



Quantitative
decision
support

TECHNOLOGY DRIVING POI (POTI)

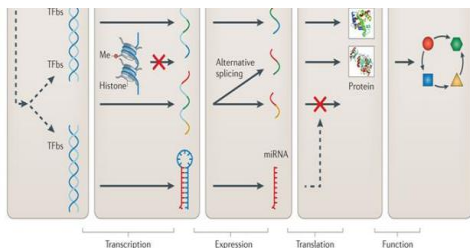
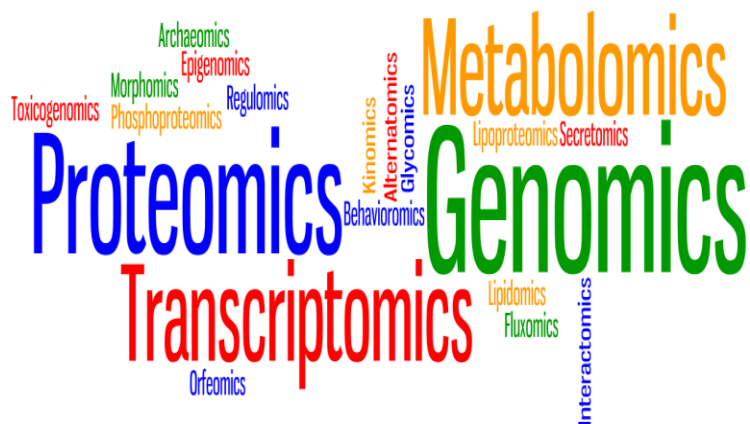


FOUR THEMATIC AREAS

1. Scientific innovation and new data streams
2. Distributed data: from data collection to data connection
3. Quantitative and data driven methods
(Transforming big data into scientific evidence)
4. Exploring the living scientific opinion

1. SCIENTIFIC INNOVATION AND NEW DATA STREAMS

1.



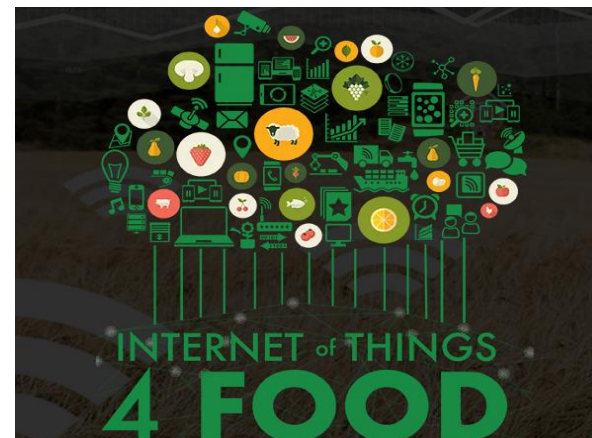
Information on
 functional status
 of an organism

 • Information on
 impact of
 external factors
 on an organism

Nature Reviews | Genetics

Need for access to and processing of large (complex) datasets with minimal manual interventions

2.

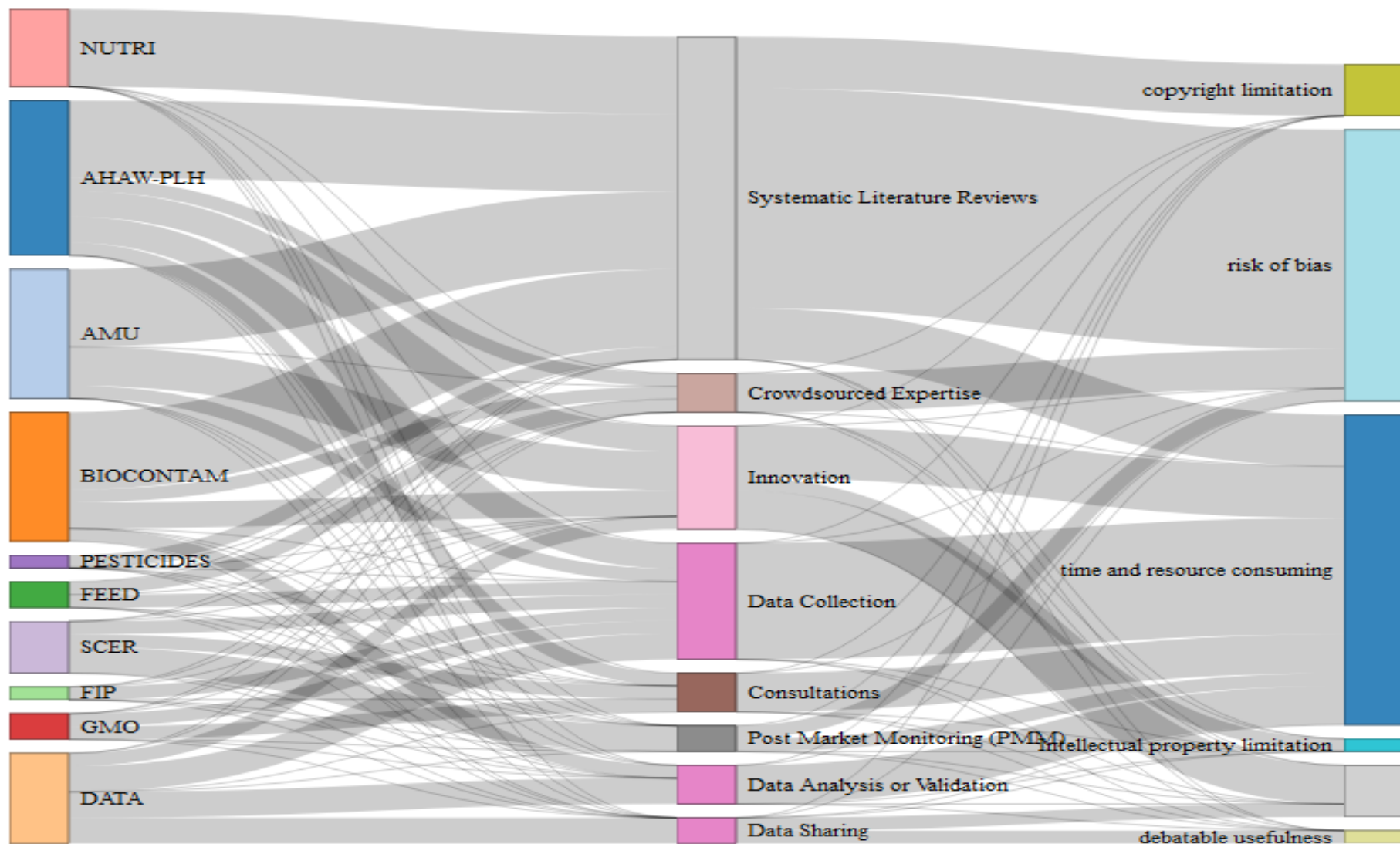


Real time monitoring systems

3.



CROWDSOURCING: POTENTIAL ACTIVITIES AND RISK



2. FROM DATA COLLECTION TO DATA CONNECTION

An ecosystem (virtual network) of API* portals


data.europa.eu

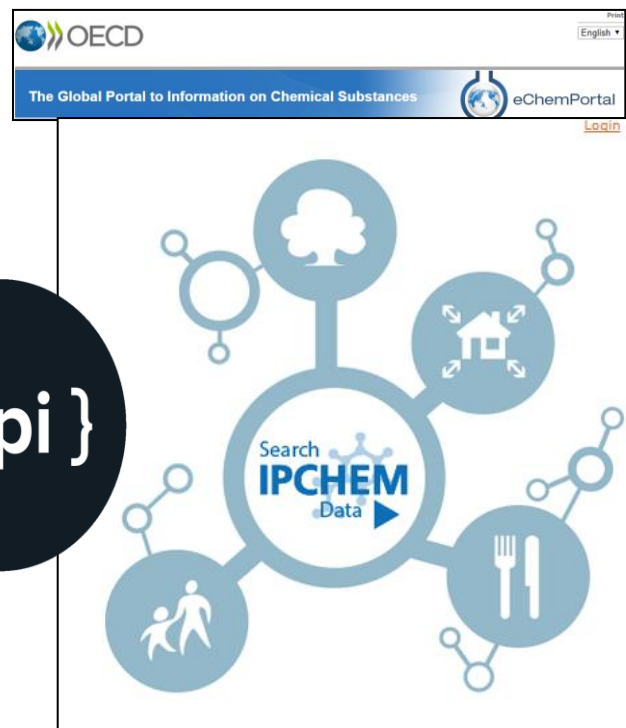


The [European Union Open Data Portal](#) is your single point of access to open data produced by EU institutions and bodies.



The [European Data Portal](#) harvests the metadata of Public Sector Information available on public data portals across European countries.

{ api }



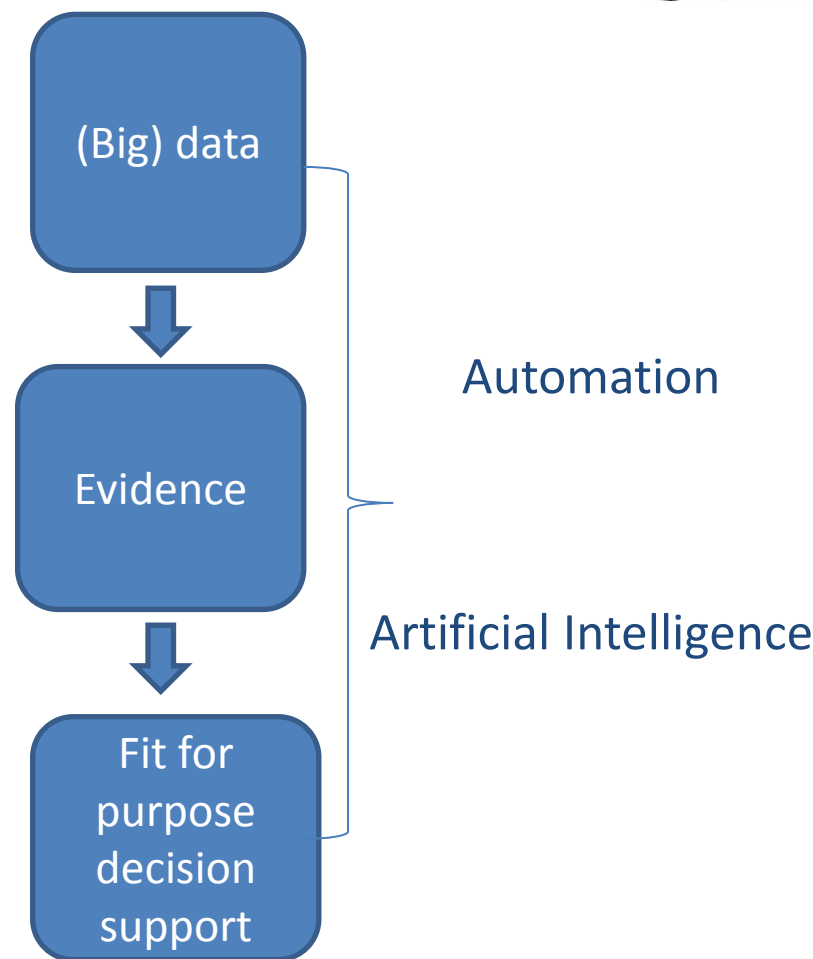
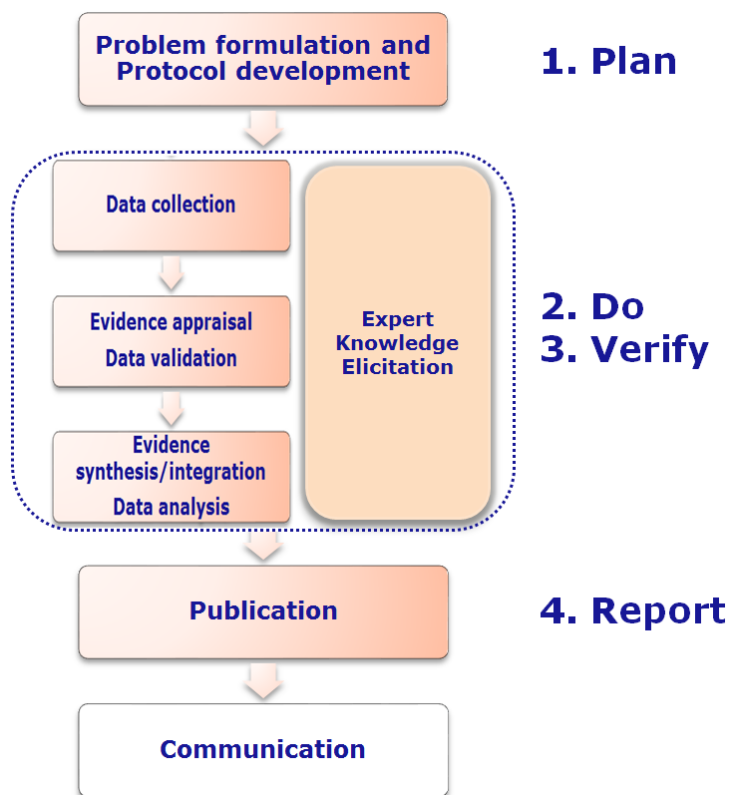
The domain **data.europa.eu** is managed by the [Publications Office of the EU](#).

*API: Application Programming Interface.

A back-end technology that facilitates exchange of information across the internet

3. QUANTITATIVE AND DATA DRIVEN METHODS

Capitalize on data: Transforming (big) data into scientific evidence



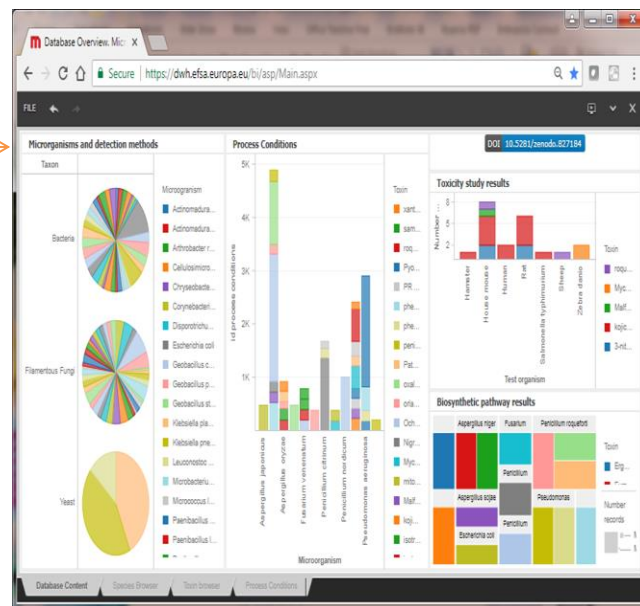
4. EXPLORING THE LIVING OPINION

From static PDF documents to real time analysis and communication



Model platform

Knowledge Junction



More integrated EFSA
scientific data
warehouse



FOUR THEMATIC AREAS

1. Scientific innovation and new data streams
2. Distributed data: from data collection to data connection
3. Quantitative and data driven methods
(Transforming big data into scientific evidence)
4. Exploring the living scientific opinion

STAY CONNECTED!



Subscribe to

www.efsa.europa.eu/en/news/newsletters

www.efsa.europa.eu/en/rss



Engage with careers

www.efsa.europa.eu/en/engage/careers



Follow us on Twitter

[@efsa_eu](https://twitter.com/efsa_eu)

[@plants_efsa](https://twitter.com/plants_efsa)

[@methods_efsa](https://twitter.com/methods_efsa)